

The 2007 Lifelong Learning and Self-Assessment Study Guide

Brought to you exclusively by the publisher of:

EMERGENCY MEDICINE PRACTICE

EBMEDICINE.NET

AN EVIDENCE-BASED APPROACH TO EMERGENCY MEDICINE

The 2007 Lifelong Learning and Self-Assessment Study Guide

CEO: Robert Williford

President and Publisher: Stephanie Williford

Direct all questions to EB Medicine: 1-800-249-5770 • Fax: 1-770-500-1316 • Non-U.S. subscribers, call: 1-678-366-7933

EB Medicine • 5550 Triangle Parkway, Suite 101 • Norcross, GA 30092
E-mail: ebm@ebmedicine.net • Web Site: <http://www.ebmedicine.net>

The 2007 Lifelong Learning and Self-Assessment Study Guide is published by EB Medicine, 5550 Triangle Parkway, Suite 10, Norcross, GA 30092. Opinions expressed are not necessarily those of this publication. Mention of products or services does not constitute endorsement. This publication is intended as a general guide and is intended to supplement, rather than substitute, professional judgment. It covers a highly technical and complex subject and should not be used for making specific medical decisions. The materials contained herein are not intended to establish policy, procedure, or standard of care. *The 2007 LLSA Study Guide*, and *Emergency Medicine Practice* are trademarks of EB Medicine © 2007 EB Practice, LLC. All rights reserved. No part of this publication may be reproduced in any format without written consent of EB Medicine. Price: \$249. Call 1-800-249-5770 to ask about multiple-copy discounts.

For a complete explanation of Emergency Medicine Continuous Certification, including the Lifelong Learning and Self-Assessment component, please go to the American Board of Emergency Medicine Web site at <http://www.abem.org>.

Brought to you exclusively by the publisher of:

EMERGENCY MEDICINE PRACTICE

EBMEDICINE.NET

AN EVIDENCE-BASED APPROACH TO EMERGENCY MEDICINE

Editor-in-Chief

Andy Jagoda, MD, FACEP, Professor and Vice-Chair of Academic Affairs, Department of Emergency Medicine; Mount Sinai School of Medicine; Medical Director, Mount Sinai Hospital, New York, NY.

Associate Editor

John M Howell, MD, FACEP, Clinical Professor of Emergency Medicine, George Washington University, Washington, DC; Director of Academic Affairs, Best Practices, Inc, Inova Fairfax Hospital, Falls Church, VA.

Editorial Board

William J Brady, MD, Associate Professor and Vice Chair, Department of Emergency Medicine, University of Virginia, Charlottesville, VA.

Peter DeBlieux, MD, LSUHSC
Professor of Clinical Medicine; LSU

Health Science Center, New Orleans, LA.

Wyatt W Decker, MD, Chair and Associate Professor of Emergency Medicine, Mayo Clinic College of Medicine, Rochester, MN.

Francis M Fesmire, MD, FACEP, Director, Heart-Stroke Center, Erlanger Medical Center; Assistant Professor, UT College of Medicine, Chattanooga, TN.

Michael J Gerardi, MD, FAAP, FACEP, Director, Pediatric Emergency Medicine, Children's Medical Center, Atlantic Health System; Department of Emergency Medicine, Morristown Memorial Hospital, NJ.

Michael A Gibbs, MD, FACEP, Chief, Department of Emergency Medicine, Maine Medical Center, Portland, ME.

Steven A Godwin, MD, FACEP, Assistant Professor and Emergency Medicine Residency Director, University of Florida

HSC/Jacksonville, FL.

Gregory L Henry, MD, FACEP, CEO, Medical Practice Risk Assessment, Inc; Clinical Professor of Emergency Medicine, University of Michigan, Ann Arbor.

Keith A Marill, MD, Instructor, Department of Emergency Medicine, Massachusetts General Hospital, Harvard Medical School, Boston, MA.

Charles V Pollack, Jr, MA, MD, FACEP, Professor and Chair, Department of Emergency Medicine, Pennsylvania Hospital, University of Pennsylvania Health System, Philadelphia, PA.

Michael S Radeos, MD, MPH, Assistant Professor of Emergency Medicine, Lincoln Health Center, Bronx, NY.

Robert L Rogers, MD, FAAEM, Assistant Professor and Residency Director, Combined EM/IM Program, University of Maryland, Baltimore, MD.

Alfred Sacchetti, MD, FACEP, Assistant Clinical Professor, Department of Emergency Medicine, Thomas Jefferson University, Philadelphia, PA.

Corey M Slovis, MD, FACP, FACEP, Professor and Chair, Department of Emergency Medicine, Vanderbilt University Medical Center, Nashville, TN.

Jenny Walker, MD, MPH, MSW, Assistant Professor; Division Chief, Family Medicine, Department of Community and Preventive Medicine, Mount Sinai Medical Center, New York, NY.

Ron M Walls, MD, Professor and Chair, Department of Emergency Medicine, Brigham & Women's Hospital, Boston, MA.

Research Editors

Nicholas Genes, MD, PhD, Mount Sinai Emergency Medicine Residency.

Beth Wicklund, MD, Regions Hospital Emergency Medicine Residency, EMRA Representative.

International Editors

Valerio Gai, MD, Senior Editor, Professor and Chair, Dept of EM, University of Turin, Italy.

Peter Cameron, MD, Chair, Emergency Medicine, Monash University; Alfred Hospital, Melbourne, Australia.

Amin Antoine Kazzi, MD, FAAEM, Associate Professor and Vice Chair, Department of Emergency Medicine, University of California, Irvine; American University, Beirut, Lebanon.

Hugo Peralta, MD, Chair of Emergency Services, Hospital Italiano, Buenos Aires, Argentina.

Maarten Simons, MD, PhD, Emergency Medicine Residency Director, OLVG Hospital, Amsterdam, The Netherlands.

CME Accreditation Information

Accreditation: This activity has been planned and implemented in accordance with the Essentials and Standards of the Accreditation Council for Continuing Medical Education (ACCME) through the joint sponsorship of Mount Sinai School of Medicine and EB Medicine. The Mount Sinai School of Medicine is accredited by the ACCME to provide continuing medical education for physicians.

Credit Designation: The Mount Sinai School of Medicine designates this educational activity for a maximum of *35 AMA PRA Category 1 Credit(s)TM* per year. Physicians should only claim credit commensurate with the extent of their participation in the activity.

Target Audience: This enduring material is designed for board certified emergency medicine physicians.

Needs Assessment: The need for this educational activity was determined by a survey of previous participants and the American Board of Emergency Medicine.

Date of Original Release: This issue of *Emergency Medicine Practice* was published January 30, 2007. **This activity is eligible for CME credit through January 30, 2010.** The latest review of this material was December 20, 2006.

Discussion of Investigational Information: As part of the newsletter, faculty may be presenting investigational information about pharmaceutical products that is outside Food and Drug Administration approved labeling. Information presented as part of this activity is intended solely as continuing medical education and is not intended to promote off-label use of any pharmaceutical product.

Faculty Disclosure: It is the policy of Mount Sinai School of Medicine to ensure objectivity, balance, independence, transparency, and scientific rigor in all CME-sponsored educational activities. All faculty participating in the planning or implementation of a sponsored activity are expected to disclose to the audience any relevant financial relationships and to assist in resolving any conflict of interest that may arise from the relationship. Presenters must also make a meaningful disclosure to the audience of their discussions of unlabeled or unapproved drugs or devices.

In compliance with all ACCME Essentials, Standards, and Guidelines, all faculty for this CME activity were asked to complete a full disclosure statement. All faculty for this activity report no significant financial interest or other relationship with the manufacturer(s) of any commercial product(s) discussed in this educational presentation.

For further information, please see The Mount Sinai School of Medicine website at www.mssm.edu/cme.

ACEP Accreditation: The 2007 Lifelong Learning and Self-Assessment Study Guide is approved by the American College of Emergency Physicians for 35 hours of ACEP Category 1 credit.

Earning Credit: Paid purchasers of the 2007 Lifelong Learning and Self-Assessment Study Guide with current and valid licenses in the United States who read the 2007 Lifelong Learning and Self-Assessment Study Guide, complete the post test and Evaluation Form, and return it according to the published instructions are eligible for up to 35 hours of Category 1 credit toward the AMA Physician's Recognition Award (PRA). You must complete both the post test and CME Evaluation Form to receive credit. Results will be kept confidential. CME certificates will be delivered to each participant scoring higher than 70%.

CME Objectives

Upon completing this activity, you should be able to:

1. Evaluate the clinical value of the total white blood cell count and temperature in the evaluation of patients with suspected appendicitis.
2. Understand how physicians make clinical decisions.
3. Recognize adverse drug-related events in elder patients presenting to the ED.
4. Evaluate and manage patients presenting to the ED in early pregnancy.
5. Clinically assess hypovolemia.
6. Determine if dyspneic patients in the ED have congestive heart failure.
7. Understand and manage patients presenting with attempted suicide and self-inflicted injury.
8. Understand the effects of brief motivational interventions for alcohol with motor vehicle crash patients.
9. Understand the effects of opioid dependence.
10. Evaluate the efficacy of the drugs available to treat schizophrenia.
11. Understand generalized anxiety disorder and the treatments.
12. Identify and intervene in cases of domestic violence.
13. Implement guidelines for unstable angina/non-ST-segment elevation myocardial infarction in the ED.
14. Evaluate the standards of care for the management of patients in the ED.
15. Understand the short-term risk of death after treatment with nesiritide for decompensated heart failure.
16. Determine if blood cultures are necessary in adults with cellulitis.
17. Examine the prevalence of MRSA in ED skin and soft tissue infections.
18. Care for the renal transplant recipient in the ED.
19. Evaluate the efficacy of ultrasonography-guided peripheral intravenous access vs. traditional approaches in patients with difficult intravenous access.
20. Be prepared for the American Board of Emergency Medicine Lifelong Learning and Self-Assessment examination.

2007 LLSA TABLE OF CONTENTS

	Article review starts on:	CME questions start on:	Article reprint starts on:	Answers & explanations start on:
1. Clinical Value of the Total White Blood Cell Count and Temperature in the Evaluation of Patients with Suspected Appendicitis	1	2	3	233
2. Clinical Decision Making	11	13	15	233
3. Emergency Physician Recognition of Adverse Drug-related Events in Elder Patients Presenting to an Emergency Department	25	27	29	234
4. Clinical Policy: Critical Issues in the Initial Evaluation and Management of Patients Presenting to the Emergency Department in Early Pregnancy	39	42	43	234
5. Clinical Assessment of Hypovolemia	55	57	59	235
6. Does This Dyspneic Patient in the Emergency Department Have Congestive Heart Failure?	63	65	67	236
7. National Study of US Emergency Department Visits for Attempted Suicide and Self-Inflicted Injury	75	77	79	237
8. Emergency Department Brief Motivational Interventions for Alcohol With Motor Vehicle Crash Patients	87	89	91	238
9. A 35-Year-Old Physician With Opioid Dependence	97	98	101	239
10. Schizophrenia	105	107	109	239
11. Generalized Anxiety Disorder	121	122	125	240
12. Domestic violence: An Approach To Identification And Intervention	133	135	137	241
13. Practical Implementation of the Guidelines for Unstable Angina/Non-ST-Segment Elevation Myocardial Infarction in the Emergency Department	153	155	157	241
14. Are We Putting the Cart Ahead of the Horse: Who Determines the Standard of Care for the Management of Patients in the Emergency Department?	171	172	175	242
15. Short-term Risk of Death After Treatment With Nesiritide for Decompensated Heart Failure	179	181	183	243
16. Are Blood Cultures Necessary in Adults With Cellulitis?	187	188	189	243
17. High Prevalence of Methicillin-Resistant Staphylococcus aureus in Emergency Department Skin and Soft Tissue Infections	191	193	195	244
18. Care of the Renal Transplant Recipient in the Emergency Department	205	207	209	244
19. Ultrasonography-Guided Peripheral Intravenous Access Versus Traditional Approaches in Patients With Difficult Intravenous Access	221	223	225	245

REVIEW 1. CLINICAL VALUE OF THE TOTAL WHITE BLOOD CELL COUNT AND TEMPERATURE IN THE EVALUATION OF PATIENTS WITH SUSPECTED APPENDICITIS

Article Citation:

Cardall T, Glasser J, Guss DA. Clinical value of the total white blood cell count and temperature in the evaluation of patients with suspected appendicitis. *Acad Emerg Med.* Oct 2004;11(10):1021-1027.

Reviewer:

Charles Stewart, MD, FACEP, FAAEM, Colorado Springs, CO

Synopsis

The authors of this article performed a two-year prospective consecutive case study of 293 patients with abdominal pain where appendicitis was the attending emergency physician's primary diagnosis. They found that an elevated total white blood cell (WBC) count had very poor sensitivity and specificity, concluding that this test has almost no clinical utility in the diagnosis of appendicitis. They found that there was minimal statistical association between a temperature of greater than 99°F and the presence of appendicitis.

Key Points

1. In a modest sized sample of 293 patients with 31% proven appendicitis (92), the white blood cell count was found to have no clinical utility.
2. In the same sample, the patient's temperature was also found to have very limited clinical utility.

Discussion

1. Background and Goals

- Emergency appendectomy is the most common emergency abdominal procedure performed in the United States.
- Atypical presentations are common in appendicitis.
- A delay in the diagnosis can result in increased complications for both the patient and the physician.
- The prevailing perception is

that the patient with appendicitis will likely have a modest elevation of temperature and of the total WBC count.

- Patients with an operation performed for appendicitis with a negative appendix have a higher mortality than patients with acute appendicitis.
- The goal of this study was to assess the utility of the WBC count and the temperature in the diagnosis of appendicitis in the emergency department in patients with presenting signs and symptoms of this disease. Most prior studies of the WBC count were retrospective; this study is prospective and occurs in the clinical setting of the emergency physician.

2. The Study Methods

This was a two-year, prospective, consecutive case study from April 1998 to March 2000.

Inclusion criteria: All patients presenting with abdominal pain for whom the diagnosis of appendicitis was considered.

This study only enrolled those patients who were thought to have a high degree of likelihood of appendicitis. It did not enroll patients whose final diagnosis was appendicitis and who had such an atypical presentation that the emergency physician's first thoughts were of other causes than appendicitis.

Exclusion criteria: All pregnant patients were excluded. Fifteen patients were excluded as lost to follow-up. Age was not an exclusion criteria. There is no mention in the study of patients who withheld consent for the study.

Data collection: Patients were enrolled in consecutive fashion after informed consent was obtained.

3. Results of Study

As noted previously, 308 patients were enrolled (293 in the study and 15 who were excluded as lost to follow-up). There were 130 males (44.4%) and 163 females (56.6%). The ages of the patients ranged from 7 to 75 years. Ninety-two of the patients had appendicitis (31% prevalence). Of these 92 patients, 21% had a perforation. Helical CT scan was performed in 248 of the patients and 60 patients were admitted to surgery without CT scanning. A prior study by one of the authors (Guss) reported the results of the CT scans and also reported that, of the 60 patients sent to surgery, only 41 had appendicitis (68%).

This prior referenced study specified that CT scan was first performed without contrast and then contrast-enhanced at the discretion of the radiologist. CT scans were interpreted as positive for appendicitis when a dilated appendix was identified and associated with an appendicolith or signs of peri-appendiceal inflam-

mation. Of the 250 patients evaluated with CT, 51 had appendicitis (21%). It should be noted that helical CT was negative in four patients who were subsequently diagnosed with appendicitis.

For a usual cut-off of 10,000 cells per mm³, the sensitivity of the WBC count was only 75% and the specificity of the test was approximately as good as flipping a coin (47%). At 11,900 cells per mm³, the sensitivity was 69% and the specificity was 72% a modest improvement, but still unsatisfactory as a clinical determination. The authors go on to point out that the distributions of the total WBC count in those patients with and without appendicitis exhibit a very high degree of overlap at all values of the WBC.

For patients with and without appendicitis, the temperature distributions were essentially identical. The sensitivity of an elevated temperature for appendicitis was 47% and the specificity was 64%. The authors recommended against its use as a determinant for the diagnosis of acute appendicitis.

4. Relevance of Study

The measurement of the total

WBC and temperature is usually considered routine in the evaluation of the patient with suspected appendicitis. The data in this study belie any reliance on either of these two measurements in the diagnosis of appendicitis. Indeed, the analysis of the data strongly suggests that there is no value of total WBC that is both sensitive and specific enough to be clinically useful.

As stated previously, the authors also noted that temperature was unhelpful for the diagnosis of appendicitis.

Likewise, this study did not include any patients with appendicitis who had presented with such atypical signs/symptoms that the emergency physician did not think of the diagnosis.

Questions

Please use the enclosed answer form to complete the CME questions. Upon completion, you may verify your answers in the back of the book.

1.1. According to results from this study, what percentage of patients with appendicitis

will have an elevated WBC count (greater than 10,000 cells/mm³)?

- a. 26%
- b. 36%
- c. 56%
- d. 76%

1.2. What is the percentage of positive appendectomy in this study?

- a. 21%
- b. 31%
- c. 61%
- d. 68%

1.3. According to this study, which value of the WBC will optimize both specificity and sensitivity in the diagnosis of appendicitis?

- a. 9,000
- b. 10,900
- ck. 11,900
- dl. 15,900

1.4. What is the percentage of perforation of the appendix in this study?

- a. 21%
- b. 31%
- c. 61%
- d. 68%

Clinical Value of the Total White Blood Cell Count and Temperature in the Evaluation of Patients with Suspected Appendicitis

Taylor Cardall, MD, Judd Glasser, MD, David A. Guss, MD

Abstract

Objectives: The total white blood cell (WBC) count and temperature are often expected to be elevated in patients with appendicitis. Clinicians often use the results of these parameters in making a judgment about the presence or absence of disease. The objective of this study was to assess the discriminatory value of the total WBC count and presenting body temperature in patients presenting to the emergency department (ED) with signs and symptoms suggestive of appendicitis. **Methods:** This was a prospective consecutive case series in a university ED with an annual census of 38,000. All patients presenting to the ED in whom the diagnosis of appendicitis was the attending physician's primary consideration were enrolled. Measures included age, gender, symptoms, physical findings, patient temperature as taken in the ED, initial total WBC count, and discharge diagnosis. Admitted patients were followed up until surgical or clinical outcomes, and discharged patients were followed up by telephone two weeks after the initial visit. All statistical analysis was performed using StatsDirect version 1.9.8. **Results:** A total of 293 patients were enrolled over a two-year study period. The total WBC count was measured in 274 cases, and the temperature was measured in 293 cases. There were 130 male patients and 163 female patients. The mean age of the patients was 30.8 years (range, 7–75 years). Appendicitis was confirmed in 92 patients. In this study group of patients, a total WBC count $>10,000$ cells/mm³ had a sensitivity of 76% (95% confidence interval [95% CI] = 65% to 84%) and a specificity of 52% (95%

CI = 45% to 60%). The positive predictive value (PPV) was 42% (95% CI = 35% to 51%), and the negative predictive value (NPV) was 82% (95% CI = 74% to 89%). The positive likelihood ratio (LR) was 1.59 (95% CI = 1.31 to 1.93), and the negative LR was 0.46 (95% CI = 0.31 to 0.67). A temperature $>99.0^{\circ}\text{F}$ had a sensitivity of 47% (95% CI = 36% to 57%) and a specificity of 64% (95% CI = 57% to 71%). The PPV was 37% (95% CI = 29% to 46%), and the NPV was 72% (95% CI = 65% to 79%). The positive LR was 1.3 (95% CI = 0.97 to 1.72), and the negative LR was 0.82 (95% CI = 0.65 to 1.01). The areas under the curve for the receiver-operating characteristic (ROC) curve were 0.72 (95% CI = 0.65 to 0.79) and 0.59 (95% CI = 0.52 to 0.66) for an elevated total WBC count and an elevated temperature, respectively. **Conclusions:** An elevated total WBC count $>10,000$ cells/mm³, while statistically associated with the presence of appendicitis, had very poor sensitivity and specificity and almost no clinical utility. There was minimal statistical association between a temperature of $>99^{\circ}\text{F}$ and the presence of appendicitis. The ROC curve suggests there is no value of total WBC count or temperature that has sufficient sensitivity and specificity to be of clinical value in the diagnosis of appendicitis. Clinicians should be wary of reliance on either elevated temperature or total WBC count as an indicator of the presence of appendicitis. **Key words:** appendicitis; temperature; WBC count; abdominal pain. *ACADEMIC EMERGENCY MEDICINE* 2004; 11:1021–1027.

Emergency appendectomy is the most common emergency abdominal procedure performed in the United States.¹ Although patients with acute appendicitis often present with a characteristic symptom complex and physical findings, atypical presentations are common. Missed or delayed diagnosis can lead to increased rates of perforation, morbidity, and un-

necessary appendectomy. In 1997, 15.3% of appendectomies in the United States were judged to be unnecessary, resulting in \$741.5 million of potentially avoided hospital charges.² Patients with negative appendectomies have a higher mortality rate than those with acute appendicitis, possibly due to the delay in delineation of the actual cause of presenting symptoms.²

History and physical examination are at the foundation of the diagnosis of acute appendicitis. However, due to the imprecision of these findings, adjunctive studies are usually obtained. The prevailing perception is that the typical patient with appendicitis will have a modest elevation of temperature. Most physicians evaluating patients with presumed appendicitis obtain a complete blood cell count, with the expectation that elevation of the total white blood

From Scottsdale Emergency Associates (TC), Scottsdale, AZ; and Department of Emergency Medicine, University of California at San Diego Medical Center (JG, DAG), San Diego, CA.

Received January 29, 2004; revision received April 4, 2004; accepted April 21, 2004.

Address for correspondence and reprints: David A. Guss, MD, Department of Emergency Medicine, University of California at San Diego Medical Center, 200 West Arbor Drive, #8676, San Diego, CA 92103. e-mail: dguss@ucsd.edu.

doi:10.1197/j.aem.2004.04.011

cell (WBC) count supports the diagnosis of appendicitis, and a normal or low count tends to mitigate the diagnosis. The most recent editions of several leading medical texts recommend this test as part of the evaluation of patients with possible appendicitis,³⁻⁶ despite several studies that acknowledge the limitations of this test.⁷⁻¹⁰

Most studies investigating the utility of total WBC count have been retrospective and have comprised patients who were operated on or admitted to the hospital for presumed acute appendicitis. Investigating the utility of total WBC count on this relatively narrow spectrum of patients can introduce bias and does not reflect the real-world application of the test in a more diverse patient population in a clinical setting such as the emergency department (ED).¹¹

The objective of this study was to assess the discriminatory value of total WBC count and temperature in a consecutive group of patients presenting to an ED with signs and symptoms suggestive of acute appendicitis.

METHODS

Study Design. This was a prospective study performed in the University of California at San Diego Medical Center ED, with an annual census of 35,000 patients. The institutional review board approved this study. Informed consent was obtained from all study participants.

Study Setting and Population. Patients were enrolled in consecutive fashion between April 1998 and March 2000. The study was designed to assess the impact of a management guideline utilizing helical computed tomography (CT) as an imaging adjunct in patients for whom the diagnosis of appendicitis was considered. This investigation represents a planned subanalysis of the total WBC count and temperature measurements obtained as part of the routine data collected on enrolled patients.

Study Protocol. The study protocol called for the inclusion of all patients presenting with signs and symptoms that led the managing attending physician in the ED to conclude that acute appendicitis was the primary diagnostic consideration. There were no age exclusions; however, due to the possible use of x-radiation as part of the study protocol, all pregnant patients were excluded. Patients were enrolled in a consecutive manner after informed consent was obtained. In the circumstance of a minor, consent was obtained from an appropriate guardian. All laboratory tests were obtained at the discretion of the managing physicians. Admitted patients were followed up to final surgical or clinical outcome. All patients discharged from the ED were followed up by telephone interview two weeks after the index visit.

Measures. Recorded data included age, gender, total WBC count from the complete blood cell count obtained during the initial ED encounter, patient temperature in the ED (maximum recorded ED patient temperature was used when more than one value was recorded), result of CT (when performed), presence of appendicitis and perforated appendix (from operative or pathologic report), and final diagnosis. Total WBC count $>10,000$ cells/mm³ and temperature $>99.0^{\circ}\text{F}$ were a priori classified as abnormal. Total WBC count of up to 10,000 cells/mm³ and temperature of up to 99.0°F were chosen empirically to maximize sensitivity. The protocol for temperature measurement in the study ED was via the oral route; however, other methods of temperature measurement may have been applied, and the means by which temperature was measured was not recorded in the study database.

Data Analysis. Analysis of the data on total WBC count and temperature included determination of sensitivities, specificities, positive predictive values (PPVs), negative predictive values (NPVs), positive likelihood ratios (+LRs), and negative likelihood ratios (-LRs). All results were reported with 95% confidence intervals (95% CIs). Receiver-operating characteristic (ROC) curves were plotted for these variables along with calculation of the area under the curve (AUC) with 95% CI. Frequency histograms were developed and plotted for total WBC count and temperature values and the presence or absence of appendicitis. These methods of data analysis allowed for the assessment of a range of total WBC count and temperature values beyond the measures selected on the a priori basis mentioned above. All statistical analysis was performed using StatsDirect version 1.9.8 (StatsDirect Software, Cheshire, England).

RESULTS

A total of 308 patients were enrolled between April 1998 and March 2000; however, 15 were lost to follow-up and excluded from the study, yielding a final study population of 293 patients. There were 130 male patients and 163 female patients. The mean age of the patients was 30.8 years (range, 7-75 years). Ninety-two of the 293 patients had appendicitis, for a prevalence of 31%. Perforated appendix was identified in 21% of patients with appendicitis. Helical CT was performed in 248 patients, and 60 patients were admitted to the surgical service directly without CT imaging of the abdomen. The results of helical CT scans have been previously reported.¹²

Total WBC count was measured in 274 patients. Table 1 shows a standard 2×2 table for total WBC count in patients with and without appendicitis. Total WBC count $>10,000$ cells/mm³ yielded a sensitivity

TABLE 1. Total WBC Count and Appendicitis

Total WBC (1,000 cells/mm ³)	Not Appendicitis	Appendicitis	Totals
≤10,000	98 (52%)	21 (24%)	199
>10,000	89 (48%)	66 (76%)	155
Totals	187	87	274

A standard 2 × 2 table for patients with and without appendicitis. For the purposes of this analysis, a WBC count >10,000 cells/mm³ was considered abnormal. WBC = white blood cell.

of 76% (95% CI = 65% to 84%) and a specificity of 52% (95% CI = 45% to 60%). The PPV was 42% (95% CI = 35% to 51%), and the NPV was 82% (95% CI = 74% to 89%). The +LR was 1.59 (95% CI = 1.31 to 1.93), and the -LR was 0.46 (95% CI = 0.31 to 0.67). Table 2 shows the LRs for different interval values of total WBC count.

Figure 1 shows an ROC curve for total WBC count. The AUC for the ROC curve was 0.72 (95% CI = 0.65 to 0.79). If one chose to maximize both sensitivity and specificity, an optimum cutoff for an abnormal total WBC count would be set at 11,900 cells/mm³, which would yield a sensitivity of 69% and a specificity of 72% (Figure 1).

Temperature was recorded for all 293 patients. Table 3 shows a standard 2 × 2 table for temperature in patients with and without appendicitis. The sensitivity of an elevated temperature for appendicitis was 47% (95% CI = 36% to 57%), and the specificity was 64% (95% CI = 57% to 71%). The PPV was 37% (95% CI = 29% to 46%), and the NPV was 72% (95% CI = 65% to 79%). The +LR was 1.3 (95% CI = 0.97 to 1.72), and the -LR was 0.82 (95% CI = 0.65 to 1.01). Table 4 shows LRs for different interval values of temperature. This analysis shows that patients with a temperature less than 98°F were slightly less likely to have appendicitis, with a -LR of 0.64 (95% CI = 0.41 to 0.95). The presence of a fever had minimal correlation with a diagnosis of appendicitis (Table 4). Figure 2 shows an ROC curve analysis for temperature, with an AUC of 0.59 (95% CI = 0.52 to 0.66).

DISCUSSION

Measurement of total WBC count and temperature is usually considered a routine part of the workup for

TABLE 2. Likelihood Ratios for Different Interval Values of WBC

WBC Count (1,000 cells/mm ³)	Not Appendicitis	Appendicitis	Likelihood Ratio (95% CI)
<8	57	11	0.41 (0.23, 0.72)
8 to <10	41	10	0.52 (0.27, 0.96)
10 to <12	38	6	0.34 (0.15, 0.73)
12 to <15	33	26	2.70 (1.73, 4.20)
≥15	25	28	2.38 (1.48, 3.81)

WBC = white blood cell.

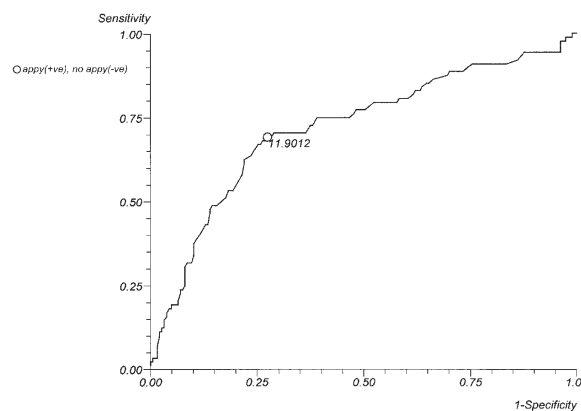


Figure 1. Receiver-operating characteristic curve for total white blood cell count and appendicitis. The area under the curve is 0.72 (95% CI = 0.65 to 0.79). If one seeks to optimize both sensitivity and specificity, this analysis shows that the ideal cutoff value for total white blood cell count would be 11,900 cells/mm³. This cutoff value yields a sensitivity of 69% and a specificity of 72%.

acute appendicitis. Many emergency physicians have observed a surgical consultant discounting the diagnosis of acute appendicitis in a particular patient because of a normal total WBC count or temperature. The data in this study indicate that neither total WBC count nor temperature is a useful indicator of the presence or absence of acute appendicitis in an at-risk population.

In this study, we analyzed the diagnostic value of total WBC count and temperature in ED patients with signs and symptoms suggestive of acute appendicitis. For a cutoff value of 10,000 cells/mm³, the sensitivity of the total WBC count is modest (76%) and the specificity is poor (47%). Additionally, the ROC curve analysis suggests that there is no value of total WBC count that is sensitive and specific enough to be clinically useful. An ideal test has an AUC of 1, while a perfectly random test has an AUC of 0.5. Generally, a “good” test has an AUC >0.8 and an “excellent” test has an AUC >0.9.

Previous studies assessing the relationship between total WBC count and appendicitis have their findings reported in a variety of ways, including comparing mean values for total WBC count in patients with and without appendicitis, and variously using p-values and at times sensitivity, specificity, PPV, and NPV.^{13–26}

TABLE 3. Temperature and Appendicitis

Temperature (°F)	Not Appendicitis	Appendicitis	Totals
<99.0	129 (64%)	49 (53%)	178
≥99.0	72 (36%)	43 (47%)	115
Totals	201	92	193

A standard 2 × 2 table for patients with and without appendicitis. For the purposes of this analysis, a temperature ≥99°F was considered abnormal.

TABLE 4. Likelihood Ratios for Different Interval Values of Temperature

Temperature (°F)	Not Appendicitis	Appendicitis	Likelihood Ratio (95% CI)
<98.0	70	21	0.64 (0.41, 0.95)
98.0 to <99.0	59	28	1.00 (0.68, 1.45)
99.0 to <100.0	45	18	0.85 (0.52, 1.36)
100.0 to <101.0	13	12	1.95 (0.94, 4.03)
101.0 to <102.0	8	9	2.38 (0.97, 5.79)
≥102.0	4	6	3.18 (0.98, 10.25)

These studies can be difficult to interpret, because both PPV and NPV depend on the prevalence of the disease. Moreover, sensitivity and specificity alone do not allow clinicians to directly apply the results of diagnostic tests to individual patients.²⁷ Additionally, a finding of statistical significance ($p < 0.05$) may not always translate to clinical significance.

The LR is defined as the true-positive rate over the false-positive rate, or sensitivity/(1-specificity). It allows the clinician to assess the likelihood that a patient with a given test result (i.e., elevated total WBC count) has that disease. Additionally, unlike PPV and NPV, the LR is independent of disease prevalence, which allows for some comparison of a diagnostic test's performances among different populations. Generally, a clinically useful diagnostic test has an LR >10 or <0.1 . In that light, our finding of a +LR of 1.59 for a total WBC count $>10,000$ cells/mm³ and a -LR of 0.46 for a total WBC count $\leq 10,000$ cells/mm³, while statistically significant, is actually quite modest and unlikely to be clinically useful.

Calculating a single LR from a continuous variable such as total WBC count causes the loss of significant information and may actually overestimate the utility of a diagnostic test.²⁸ Such an analysis forces a contin-

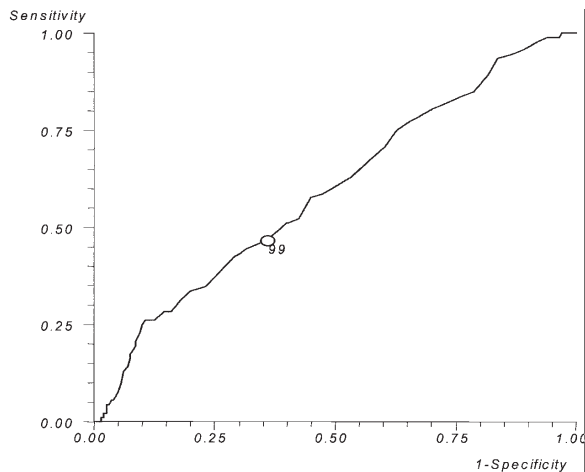


Figure 2. Receiver-operating characteristic curve for temperature and appendicitis. The area under the curve (AUC) is 0.59 (95% CI = 0.52 to 0.66). An ideal test has an AUC of 1.00, while a perfectly random test has an AUC of 0.5.

uous variable, such as the total WBC count, to become binary. One solution to this problem is to divide the variable into intervals and calculate an LR for each interval (Table 2). When we do this for total WBC count, we find that the value of the LR increases slightly, with a highest value of 2.70. However, even this LR remains relatively low based on the definition previously offered and is unlikely to be significantly more useful than the value of 10,000 cells/mm³ used in the empirical analysis.

The limited utility of a modest LR is best demonstrated by an example. Consider a patient in the ED presenting with right lower quadrant pain, for whom the treating physician has a suspicion of appendicitis. This hypothetical patient does not have peritoneal signs but does have significant right lower quadrant tenderness to palpation. There are, however, some atypical features about the presentation because the patient has had pain for only a few hours and feels hungry. In this setting, we will assume the treating clinician assigns a pretest probability of disease at approximately 25%. A total WBC count is ordered and returns with a value of 13,300 cells/mm³. This corresponds to a +LR of 2.69 (Table 2). Applying this LR to the Fagan nomogram yields a posttest probability of 47%. This level of total WBC count increases the probability of appendicitis in this patient from 25% to 47%, but this is not sufficiently different enough from the pretest probability to compel a surgeon who is hoping to avoid unnecessary surgery to operate on the patient. If our patient had a total WBC count of 7,000 cells/mm³, the -LR would be 0.41 (Table 3), which yields a posttest probability of 15%, significantly lower than the pretest value but not sufficiently low enough to safely discard the diagnosis of appendicitis or discharge the patient. The nature of LRs is such that they are most useful for patients with intermediate pretest probability, so changing the pretest probability of our example scenario would not substantially alter the impact of the findings.

While calculating the LR for different interval values of total WBC count yields more information than simply choosing a single cutoff value, potentially significant information can still be lost as one transforms a continuous variable into a set of a few intervals. One way around this problem is to plot frequency histograms of the patients with and without appendicitis and their corresponding total WBC count values (Figure 3). In this analysis, the ratio of the height of the histogram of those with appendicitis to the height of those without appendicitis is the LR for that particular value of total WBC count (i.e., true positives over false positives). One could then theoretically find an LR for any value of total WBC count and appendicitis. Additional precision can be gained by fitting curves to the data.

The main difficulty with this type of analysis is that the number of patients may be small for any given

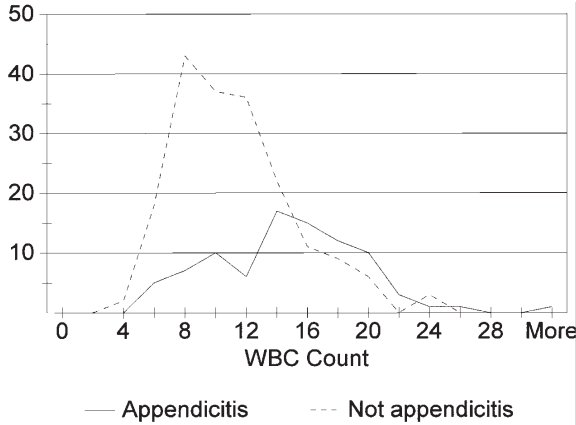


Figure 3. White blood cell (WBC) count distribution of patients with and without appendicitis. The y-axis shows the number of cases. Note the high degree of overlap between the two distributions.

value of total WBC count, resulting in large CIs. The calculation of CIs for the quotient of distribution functions is a complex task not readily accessible to the clinician. For this reason, Tandberg et al. advocate the incorporation of such analysis into the routine process of computerized laboratory result retrieval.²⁸ The computer could then calculate and display disease-specific likelihoods for each possible laboratory value. In an ideal test, the populations of those with and without the disease have no overlap (Figure 4), while in the real world a good diagnostic test demonstrates minimal overlap that generally translates to an LR >10 or <0.1 at an assigned cutoff value. In the circumstance of this study, even such a sophisticated analysis does not allow the total WBC count to be clinically useful in the diagnosis of acute appendi-

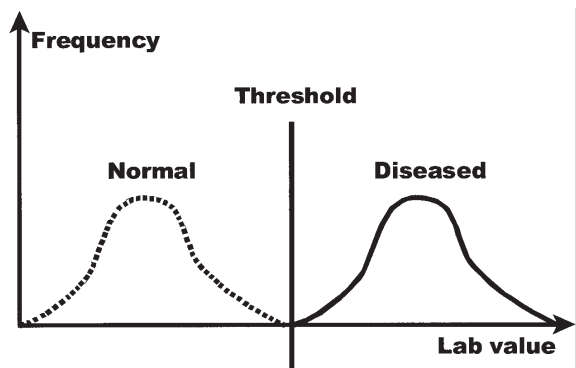


Figure 4. An ideal test. An ideal test will yield two distinct populations, those without the disease and those with the disease, with absolutely no overlap between them. This would then allow a threshold laboratory value to be set above which all persons would have the disease and below which all persons would not have the disease (in this case, assume the diseased population is the one with the higher laboratory value). There would be no false positives and no false negatives.

citis. Figure 3 demonstrates that the distributions of the total WBC count among those with and without appendicitis exhibit a very high degree of overlap.

Other investigators have constructed ROC curves for total WBC count and appendicitis with similar results. Korner et al. found an AUC of 0.69 (95% CI = 0.65 to 0.73), statistically no different from the results presented here.²⁹ That study was performed on patients operated on for suspected appendicitis, while our data are for ED patients with signs and symptoms suggestive of appendicitis. However, ROC curve analysis is independent of prevalence, allowing for a comparison of data. Granoos et al. found an AUC of 0.730 (standard error, 0.041).³⁰ Rodriguez-Sanjuan et al. found an AUC of 0.67 (standard error, 0.08; CI not available) for total WBC count and appendicitis in children.³¹ Paajanen et al. found an AUC of 0.76 (no CI reported).³² Andersson et al. found an AUC of 0.80 (standard error 0.02, CI not available) for patients admitted to the hospital for suspected appendicitis.³³ This value is significantly higher than other reported values, including our result of 0.72. The reason for this discrepancy is not clear, although it may have to do with the difference in study patients. The study population for Andersson et al. consisted of patients in Sweden admitted to the hospital for suspected appendicitis and is probably not based on the initial but rather a delayed blood count measure, as demonstrated in a report published one year later on the same population.³³ This might account for the difference in AUC of the ROC curves in that study compared with others.

Using the data of Dueholm et al., Snyder and Hayden calculated LRs for defined intervals of total WBC counts.³⁴ In general, their results are similar to those presented here; however, in that study, the total WBC count appears to discriminate slightly better than here. For example, the LR for a total WBC count between 4,000 and 7,000 cells/mm³ is 0.10 (95% CI = 0 to 0.39). However, because the numbers involved are small, the CIs are wide. Andersson et al. also calculated LRs at the same intervals presented in this study.³³ As with their ROC curve data, their results suggest that total WBC count is a better discriminator than the data presented here. They found an LR of 0.16 (95% CI = 0.10 to 0.26) for total WBC count <8,000 cells/mm³ and an LR of 7.03 (95% CI = 4.11 to 12.15) for total WBC count >15,000 cells/mm³, significantly greater than our reported values of 0.41 (95% CI = 0.23 to 0.72) and 2.38 (95% CI = 1.48 to 3.81), respectively. The reasons for this may again be related to the nature of the patient population and the use of repeated total WBC count measures over time during observation in an inpatient setting.

One might query as to what harm total WBC count might have, even if it has little discriminatory value. While largely speculative, it is possible that an elevated total WBC count might erroneously lead

a surgeon to operate when other features of the clinical scenario do not warrant or alternatively delay intervention as a result of a normal total WBC count. In support of this notion is a study by Guss and Richards,³⁵ which showed an association between delay in operative intervention and a higher rate of perforated appendix in patients presenting to the ED with an eventual diagnosis of appendicitis and a normal total WBC count.

Body temperature is an even worse discriminator for patients with appendicitis than is the total WBC count. Figure 5 shows that the temperature distributions of patients with and without appendicitis are essentially identical. Statistically the presence of fever makes the patient no more or less likely to have appendicitis, and we recommend against its use as a determinant for the diagnosis of acute appendicitis.

LIMITATIONS

Treating clinicians were not blinded as to the values of total WBC count and temperature. This lack of blinding can lead to several types of bias in associating the test result and the disease, including workup bias (the test result affects subsequent clinical workup). Workup bias can lead to underdiagnosis, thereby making a test appear more sensitive than it actually is. However, because all patients not operated on for appendicitis or admitted to the hospital were followed up by telephone 14 days after presentation, this type of bias is unlikely.

Additionally, we did not study the possible diagnostic value of the neutrophil count. Previous studies have not found the neutrophil count to be superior to total WBC count in the diagnosis of acute appendicitis.³³ We also did not study how total WBC count might perform as part of a scoring system or combination of test results. Finally, while total WBC count alone does not appear to be clinically useful in discriminating between patients with and without

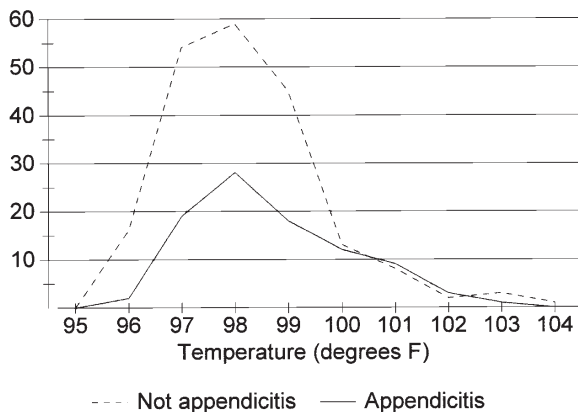


Figure 5. Temperature distribution of patients with and without appendicitis. The y-axis shows the number of cases. There is almost complete overlap of the distributions.

appendicitis, it may give clues to clinicians about the presence of other infectious diseases.

CONCLUSIONS

While there is a statistically significant relationship between total WBC count and acute appendicitis in ED patients with signs and symptoms suggestive of acute appendicitis, this relationship is modest and not believed to be clinically useful. We caution against reliance on measurement of total WBC count in the evaluation of ED patients with suspected appendicitis. Body temperature is not a useful discriminator in the evaluation of ED patients with suspected appendicitis.

References

- Owings MF, Kozak LJ. Ambulatory and Inpatient Procedures in the United States, 1996. Vital and Health Statistics. Series 13. No. 139. Hyattsville, MD: National Center for Health Statistics, November 1998, p 26 (DHHS publication no. [PHS] 2001-1250 01-0357).
- Flum DR, Koepsell T. The clinical and economic correlates of misdiagnosed appendicitis. Nationwide analysis. *Arch Surg.* 2002; 137:799-804.
- Andrassy RJ. Appendix. In: Townsend CM, Beauchamp RD, Evers BM, Mattox KM (eds). Sabiston Textbook of Surgery: The Biological Basis of Modern Surgical Practice, 16th ed. Philadelphia, PA: WB Saunders Company, 2001, pp 920-1.
- Silen W. Acute appendicitis. In: Braunwald E, Fauci AS, Isselbacher KJ, et al. (eds). Harrison's Principles of Internal Medicine. New York, NY: McGraw-Hill, 2001, pp 1705-7.
- Matthews JB, Hodin RA. Acute abdomen and appendix. In: Greenfield LJ, Mulholland MW, Oldham KT, Zelanock GB, Lillemoe KD (eds). Surgery Scientific Principles and Practice. 3rd ed. Philadelphia, PA: Lippincott Williams & Wilkins, 2001, pp 1224-36.
- Kozar RA, Roslyn JJ. The appendix. In: Schwartz SI, Shires SG, Spencer FC, Daley JM, Fischer JE, Galloway AC (eds). Principles of Surgery, 7th ed. New York, NY: McGraw Hill, 1999, pp 1383-95.
- Wolfe JM, Henneman PL. Acute appendicitis. In: Marx JA, Hockberger RS, Walls RM, et al (eds). Rosen's Emergency Medicine: Concepts and Clinical Practice, 5th ed. St. Louis, MO: Mosby, 2002, pp 1293-4.
- Sarosi GA, Turnage RH. Appendicitis. In: Feldman M, Friedman LS, Sleisenger MH (eds). Sleisenger and Fortran's Gastrointestinal and Liver Disease, 7th ed. Philadelphia, PA: Elsevier, 2002, p 2092.
- Wilcox CM. Miscellaneous inflammatory disorders of the intestine. In: Goldman L, Bennett JC (eds). Cecil Textbook of Medicine. Philadelphia, PA: WB Saunders Company, 2000, p 730.
- Hartman GE. Acute appendicitis. In: Behrman RE, Kliegman RM, Jenson HB (eds). Nelson Textbook of Pediatrics. Philadelphia, PA: WB Saunders Company, 2000, p 1179.
- Ransohoff DF, Feinstein AR. Problems of spectrum and bias in evaluating the efficacy of diagnostic tests. *N Engl J Med.* 1978; 17:926-9.
- Torbati SS, Guss DA. The impact of helical computed tomography on the outcomes of emergency department patients with suspected appendicitis. *Acad Emerg Med.* 2003; 10:823-9.
- Sasso RD, Hanna EA, Moore DL. Leukocytic and neutrophilic counts in acute appendicitis. *Am J Surg.* 1970; 120:563-6.

14. Bolton JP, Craven ER, Croft RJ, Menzies-Gow N. An assessment of the value of the white cell count in the management of suspected acute appendicitis. *Br J Surg.* 1975; 62:906–8.
15. Doraiswamy NV. The neutrophil count in childhood acute appendicitis. *Br J Surg.* 1977; 64:342–4.
16. Dueholm S, Bagi P, Bud M. Laboratory aid in the diagnosis of acute appendicitis. *Dis Colon Rectum.* 1989; 32:855–9.
17. Eriksson S, Granstrom L, Olander B, Pira U. Leukocyte elastase as a marker in the diagnosis of acute appendicitis. *Eur J Surg.* 1995; 161:901–5.
18. Bower RJ, Bell MJ, Ternberg JL. Diagnostic value of the white blood cell count and neutrophil percentage in the evaluation of abdominal pain in children. *Surg Gynecol Obstet.* 1981; 152: 424–6.
19. Lau WY, Ho YC, Chu KW, Yeung C. Leukocyte count and neutrophil percentage in appendectomy for suspected appendicitis. *Aust N Z J Surg.* 1989; 59:395–8.
20. Alvarado A. A practical score for the early diagnosis of acute appendicitis. *Ann Emerg Med.* 1986; 15:557–64.
21. Lee SL, Walsh AJ, Ho SH. Computed tomography and ultrasonography do not improve and may delay the diagnosis and treatment of acute appendicitis. *Arch Surg.* 2001; 136:556–62.
22. Hubert J, Neff U, Kelemen M. Appendicitis today: clinical and ultrasonographic deductions. *World J Surg.* 1993; 17:243–9.
23. Gwynn LK. The diagnosis of acute appendicitis: clinical assessment versus computed tomography evaluation. *J Emerg Med.* 2001; 21:119–23.
24. Raftery AT. The value of the leukocyte count in the diagnosis of acute appendicitis. *Br J Surg.* 1976; 63:143–4.
25. Miskowiak J, Burcharth F. The white cell count in acute appendicitis. *Dan Med Bull.* 1982; 29:210–1.
26. Izbicki JR, Knoefel WT, Wilker DK, et al. Accurate diagnosis of acute appendicitis: a retrospective and prospective analysis of 686 patients. *Eur J Surg.* 1992; 158:227–31.
27. Hayden SR, Brown MD. Likelihood ratio: a powerful tool for incorporating the results of a diagnostic test into clinical decision-making. *Ann Emerg Med.* 1999; 33:575–80.
28. Tandberg D, Deely JJ, O'Malley AJ. Generalized likelihood ratios for quantitative diagnostic test scores. *Am J Emerg Med.* 1997; 15:694–9.
29. Korner H, Sreide JA, Sondena K. Diagnostic accuracy of inflammatory markers in patients operated on for suspected acute appendicitis: a receiver operating characteristic curve analysis. *Eur J Surg.* 1999; 165:679–85.
30. Granoos JM, Forsstrom JJ, Irjala K, Nevalainen TJ. Phospholipase A2, C-reactive protein, and white blood cell count in the diagnosis of acute appendicitis. *Clin Chem.* 1994; 40:1757–60.
31. Rodriguez-Sanjuan JC, Martin-Parra JJ, Seco I, et al. C-reactive protein and leukocyte count in the diagnosis of acute appendicitis in children. *Dis Colon Rectum.* 1999; 42:1325–9.
32. Paajanen H, Mansikka A, Laato M, Ristamaki R, Pulkki K, Kostianen S. Novel serum inflammatory markers in acute appendicitis. *Scand J Clin Lab Invest.* 2002; 62:579–84.
33. Andersson RE, Hugander AP, Ghazi AH, et al. Diagnostic value of disease history, clinical parameters, and inflammatory parameters of appendicitis. *World J Surg.* 1999; 23:133–40.
34. Snyder BK, Hayden SR. Accuracy of leukocyte count in the diagnosis of acute appendicitis. *Ann Emerg Med.* 1999; 33: 565–74.
35. Guss DA, Richards C. Normal total WBC and operative delay in appendicitis. *Calif J Emerg Med.* 2000; 1:7–8.