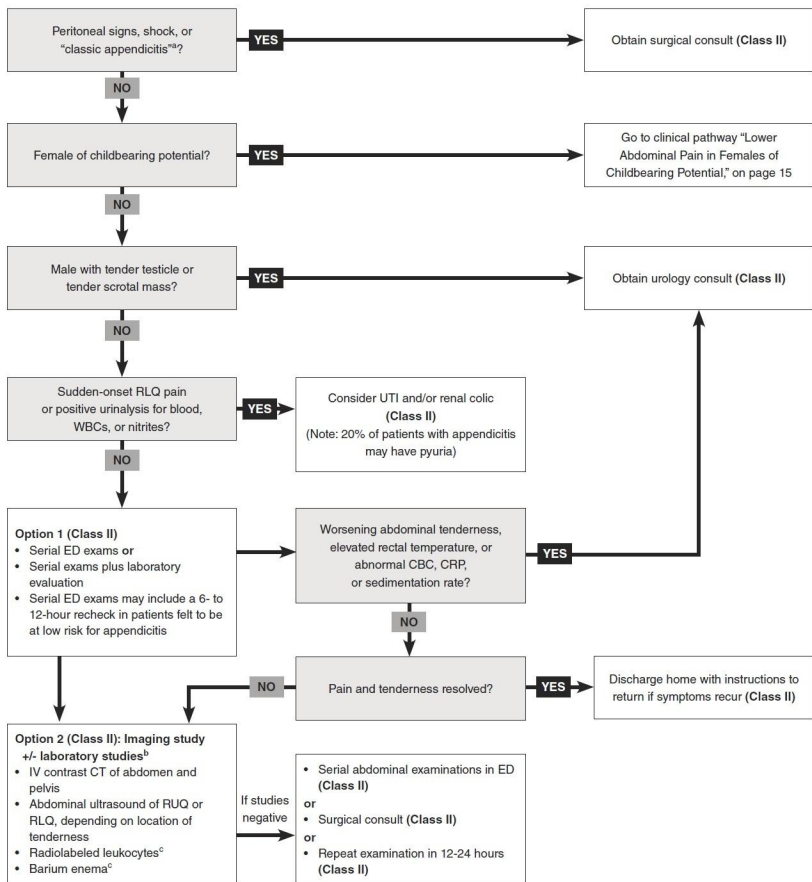


## Clinical Pathway for Patients Aged < 50 Years With Abdominal Pain



<sup>a</sup>"Classic appendicitis": migration of periumbilical pain to RLQ, anorexia, McBurney tenderness, fever.

<sup>b</sup>Imaging studies are generally preferred over laboratory evaluation alone; this is especially true in elderly patients. Consider surgical consult prior to imaging if presentation is typical for appendicitis. Plain films of abdomen are rarely helpful to rule out appendicitis.

<sup>c</sup>Rarely used in current era.

Abbreviations: CBC, complete blood cell count; CRP, C-reactive protein; CT, computed tomography; ED, emergency department; RLQ, right lower quadrant; RUQ, right upper quadrant; WBC, white blood cell.