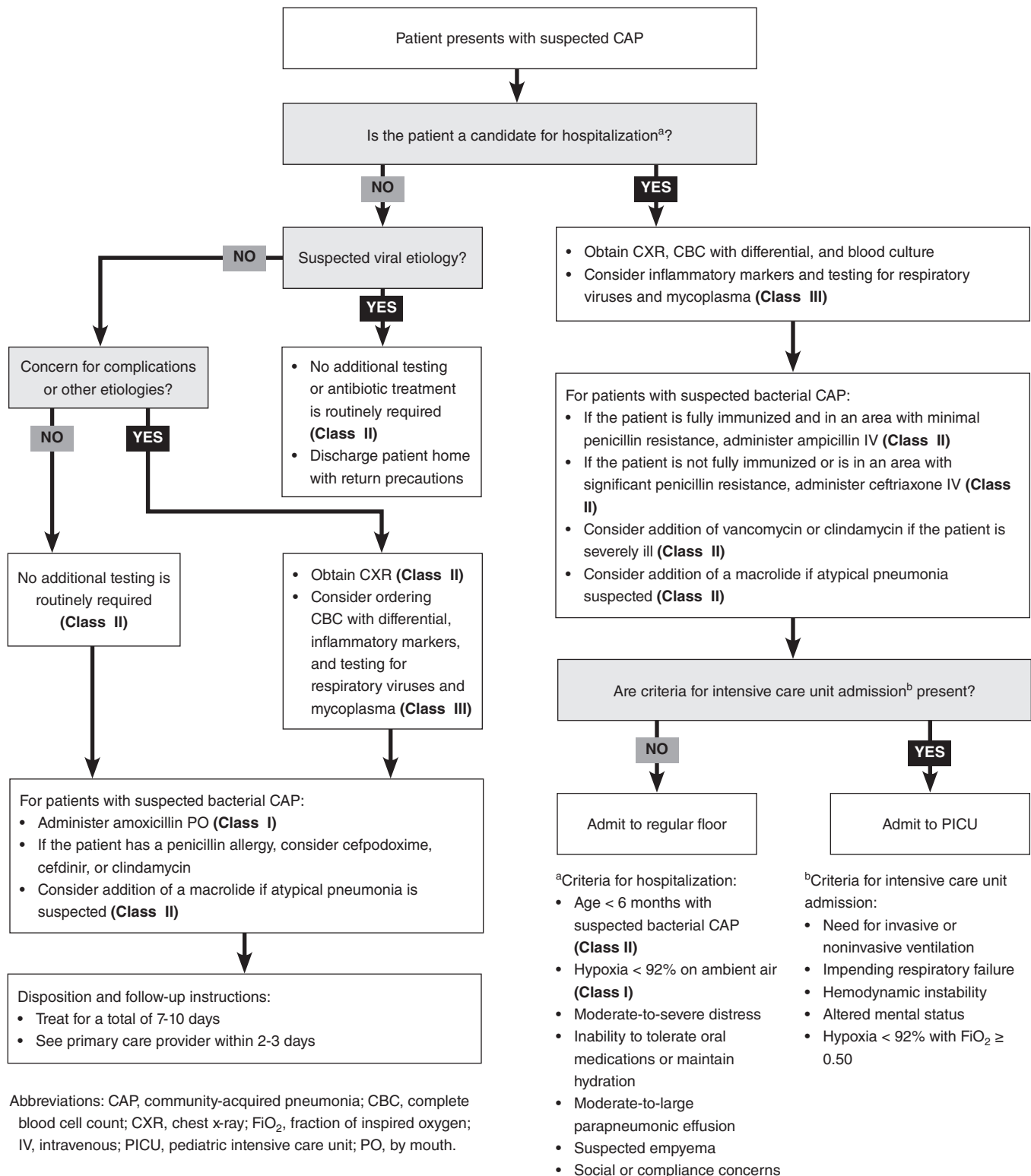


Clinical Pathway for Management of Pediatric Patients With Community-Acquired Pneumonia¹



Abbreviations: CAP, community-acquired pneumonia; CBC, complete blood cell count; CXR, chest x-ray; FiO_2 , fraction of inspired oxygen; IV, intravenous; PICU, pediatric intensive care unit; PO, by mouth.

For Class of Evidence definitions, see page 13.