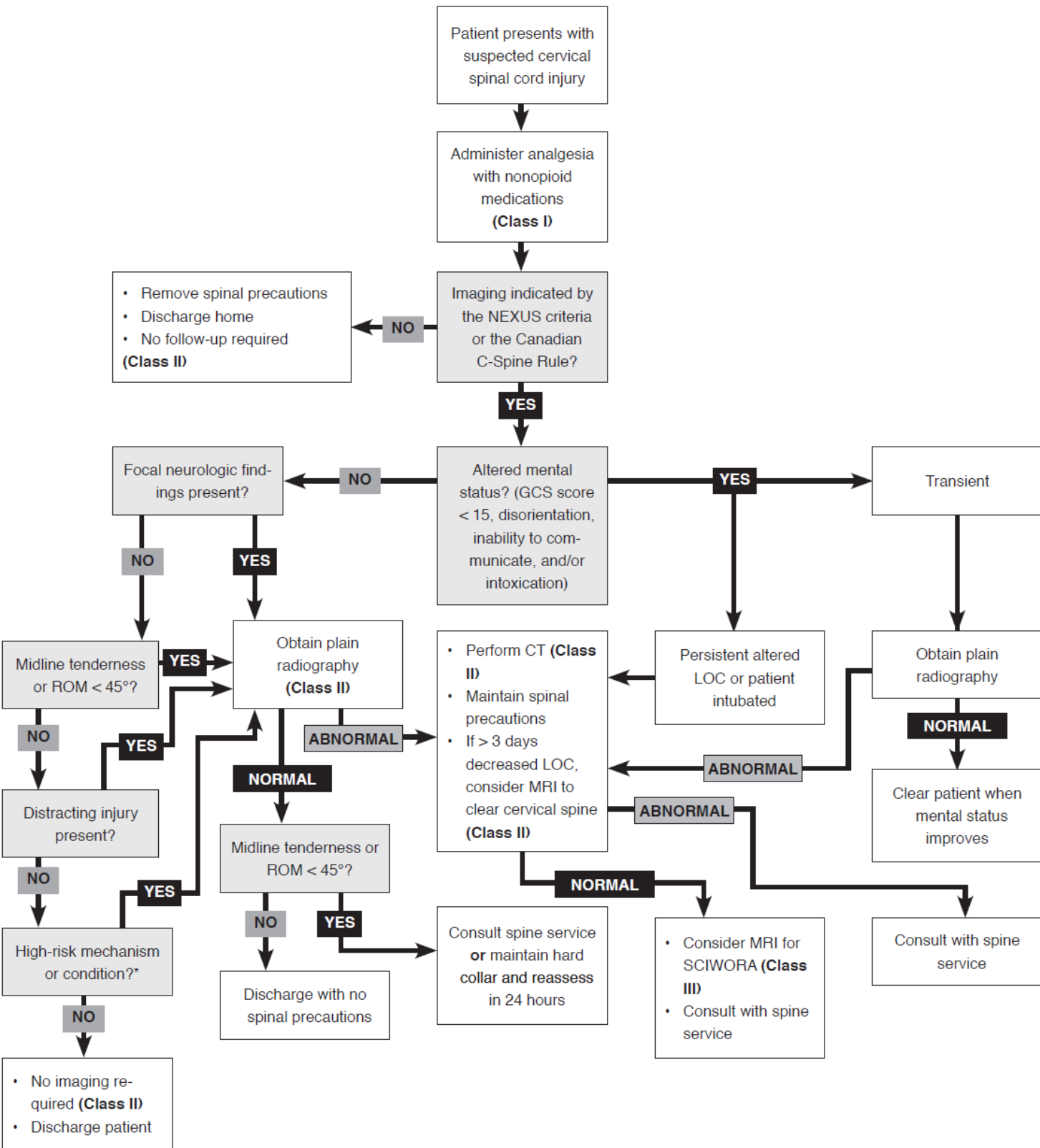


Clinical Pathway For Management In The Emergency Department Of Pediatric Patients With Suspected Cervical Spinal Cord Injury



*Fall from ≥ 3 feet/5 stairs; axial loading; MVC high-speed (> 100 km/h), rollover, or ejection; motorized recreational vehicle; bicycle struck or collision. Conditions known to predispose to CSI and that are observable on physical examination: Down syndrome, Klippel-Feil syndrome, achondroplasia, mucopolysaccharidosis, Ehlers-Danlos syndrome, Marfan syndrome, osteogenesis imperfecta, Larsen syndrome, juvenile rheumatoid arthritis, juvenile ankylosing spondylitis, renal osteodystrophy, rickets, history of CSI or cervical spine surgery.³

Abbreviations: CT, computed tomography; CSI, cervical spinal injury; GCS, Glasgow Coma Scale; LOC, level of consciousness; MVC, motor vehicle crash; MRI, magnetic resonance imaging; NEXUS, National Emergency X-Radiography Utilization Study; ROM, range of motion; SCIWORA, spinal cord injury without radiologic abnormality.